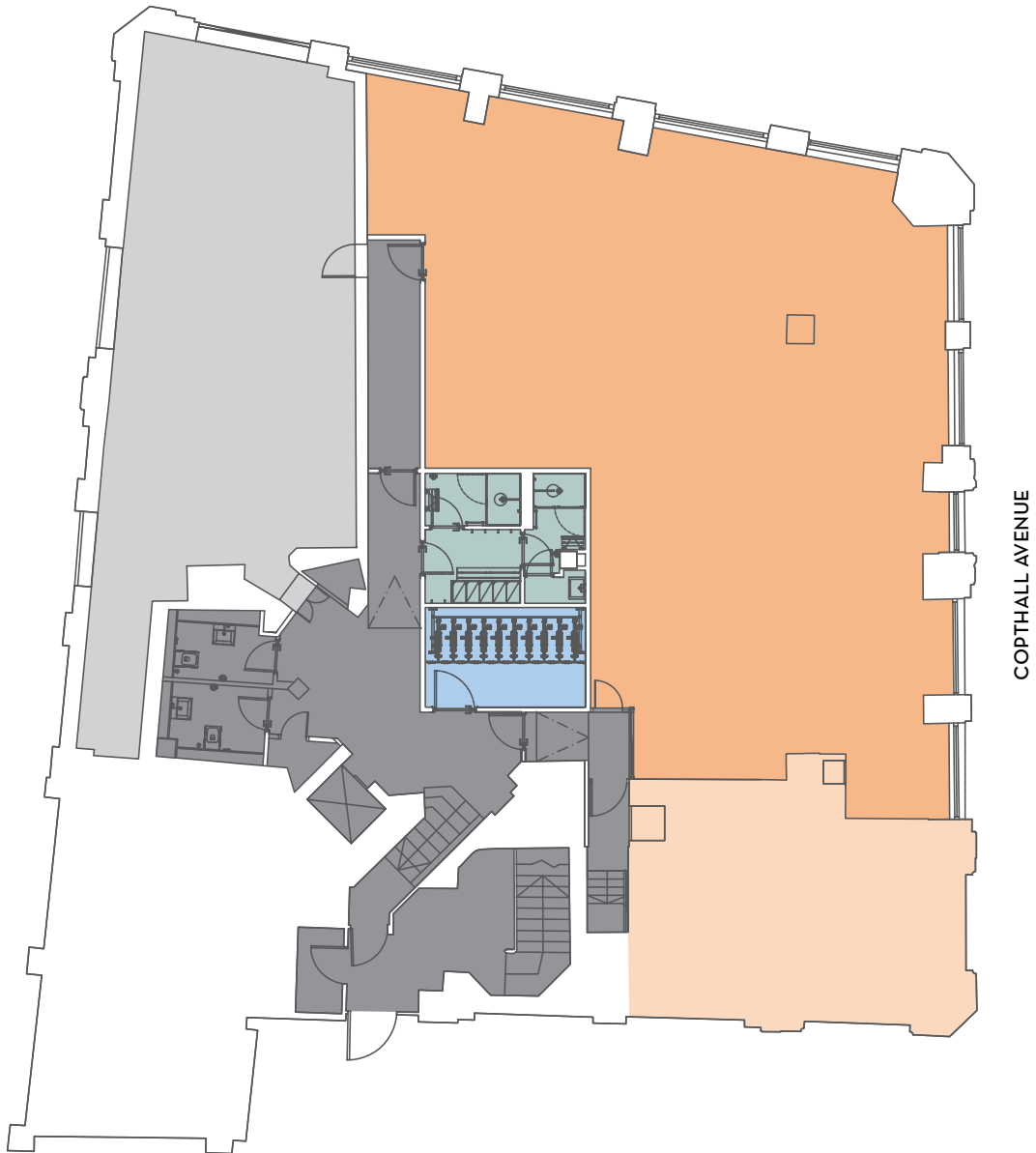


3 COPTHALL AVENUE

LONDON EC2

GROUND FLOOR
1,631 SQ FT (151.6 SQ M)



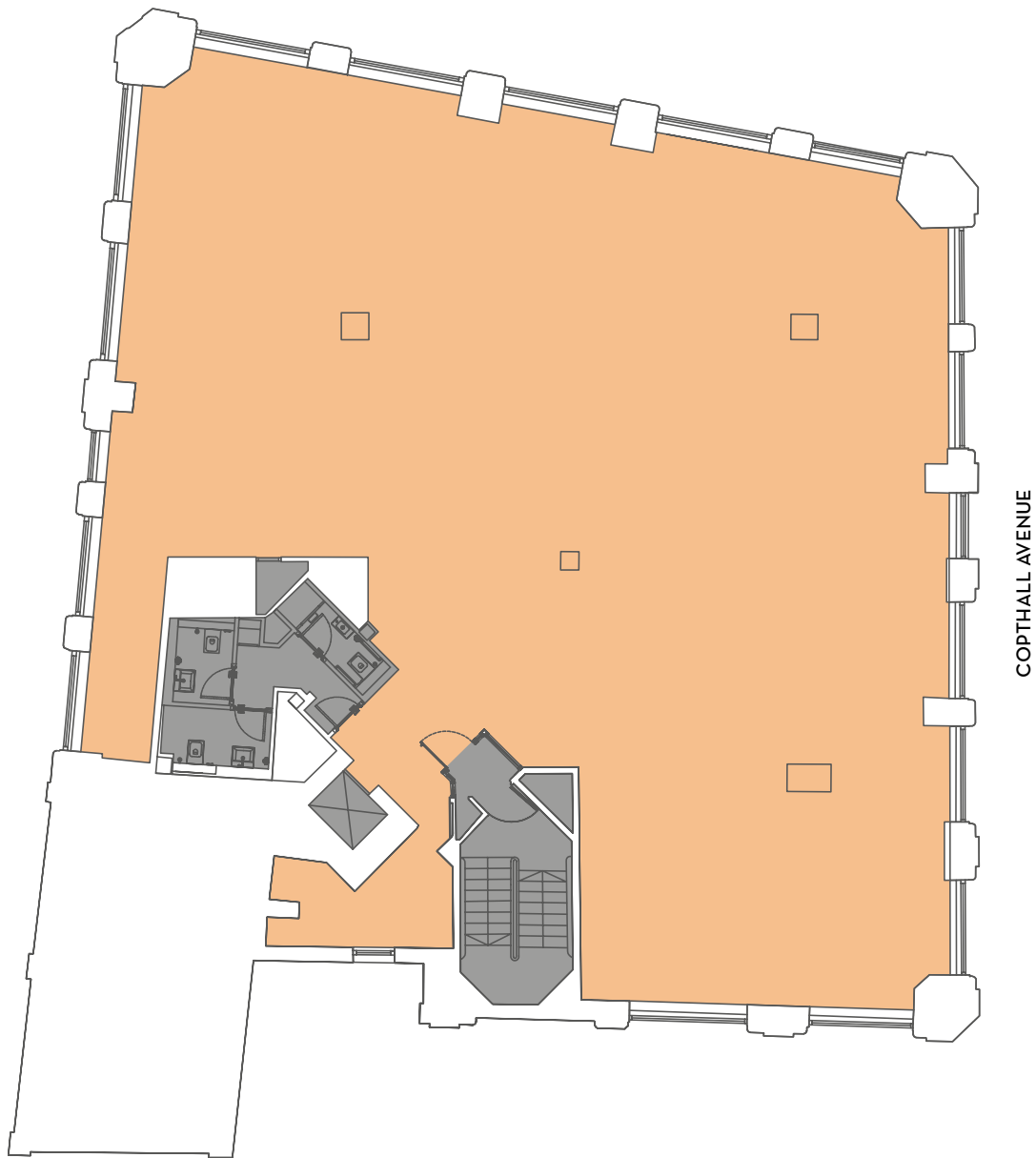
For indicative purposes only. Not to scale.

● Lettable Space ● Core ● Reception ● Showers ● Cycle Storage ● Plant Room

3 COPTHALL AVENUE

LONDON EC2

SECOND FLOOR
3,547 SQ FT (329.5 SQ M)



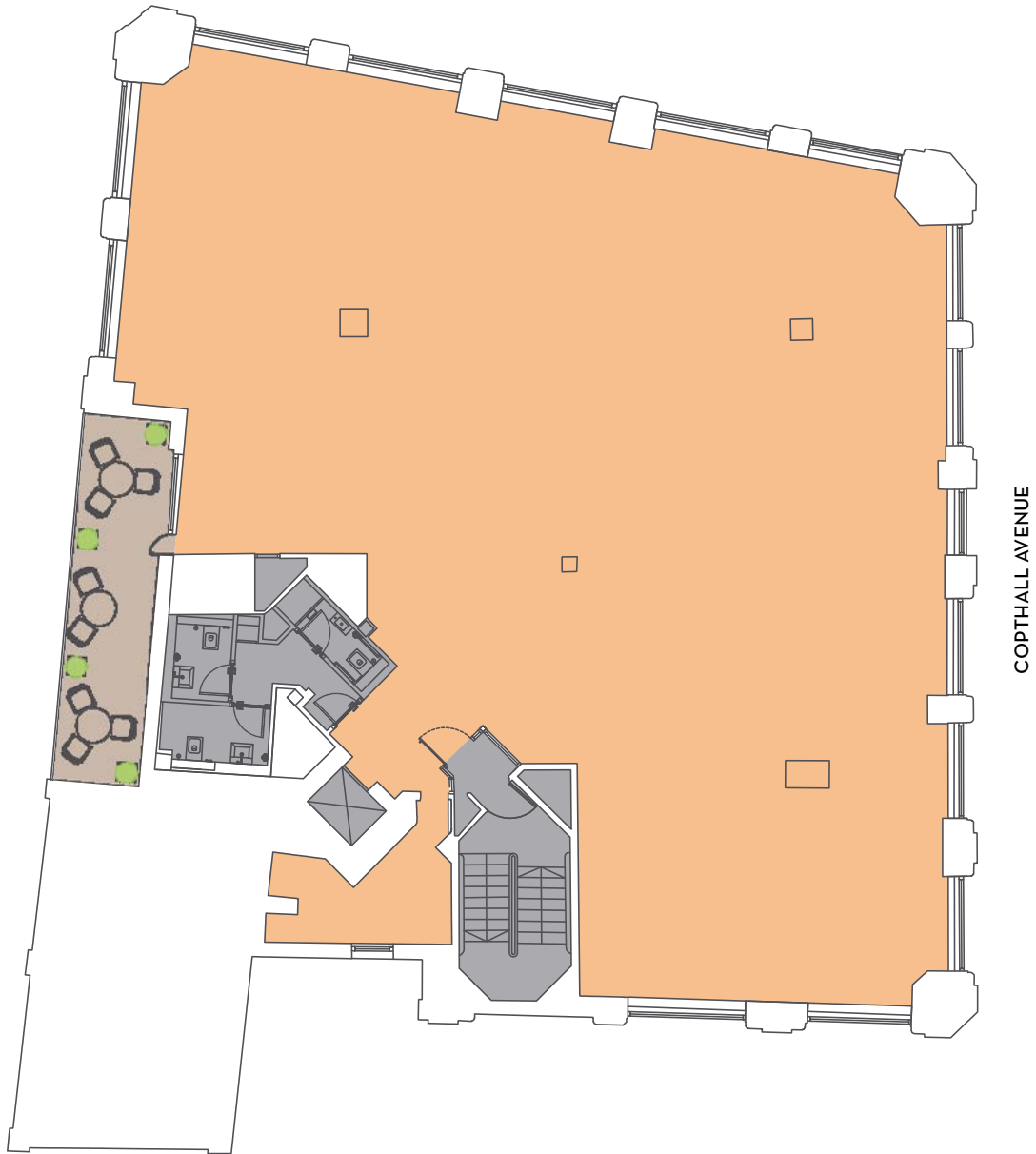
For indicative purposes only. Not to scale.

● Lettable Space ● Core ● Reception ● Showers ● Cycle Storage ● Plant Room

3 COPTHALL AVENUE

LONDON EC2

THIRD FLOOR
3,388 SQ FT (314.8 SQ M)



For indicative purposes only. Not to scale.

● Lettable Space ● Core ● Reception ● Showers ● Cycle Storage ● Plant Room